

# LASER ETCHING

## INFORMATION

- Two patterns: Lattice and Prism
- Laser etch area is 50 x 70 inches
- A strike-off will be produced for approval prior to final production
- Most Garrett leathers may be laser etched
- Laser etching is sold by the piece
- Lead time is 4 to 6 weeks

---

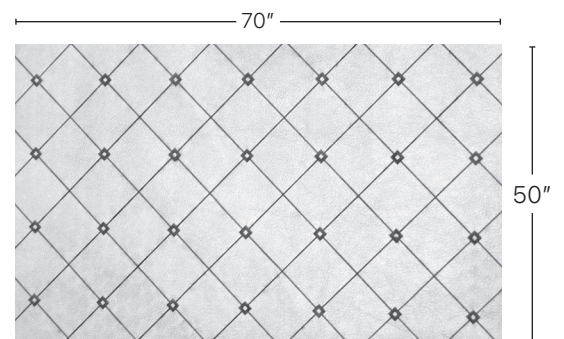
## PATTERNS

### LATTICE

Lattice is an elegant addition to any leather with its interlaced grid pattern and diamond-shaped spaces.



Leather: Pearlessence Smoke



Direction of pattern. Not to scale.



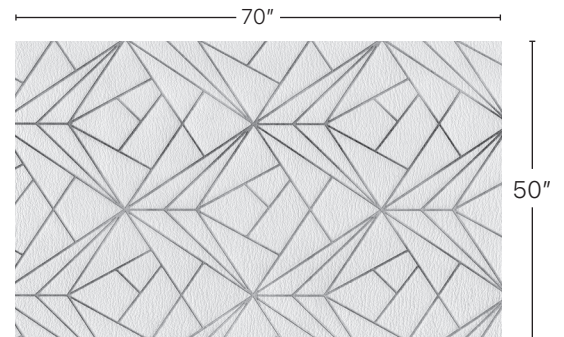
# LASER ETCHING

## PRISM

Prism is a beautiful pattern with geometric shapes.



Leather: Resilience Tiger Eye



Direction of pattern. Not to scale.



Leather: Flight Chickadee

## CUSTOM DESIGNS

- Customer must provide artwork as a vector file (.ai, .eps or .pdf)
- Maximum size is 50 x 70 inches  
Smaller sizes are available upon request
- Laser etching is sold by the piece
- A strike-off will be provided for approval prior to final production
- Lead time for final production is 4 to 6 weeks

**GARRETT**

LEATHER

800.342.7738  
garrettleather.com